

ARDEN P.U.D. POD I NORTH

BEING A REPLAT OF A PORTION OF TRACT "FD", ARDEN P.U.D. PLAT 1, AS RECORDED IN PLAT BOOK 122, PAGES 32 THROUGH 51, PUBLIC RECORDS OF PALM BEACH COUNTY, FLORIDA, AND LYING IN SECTIONS 27 AND 28, TOWNSHIP 43 SOUTH, RANGE 40 EAST, PALM BEACH COUNTY, FLORIDA.

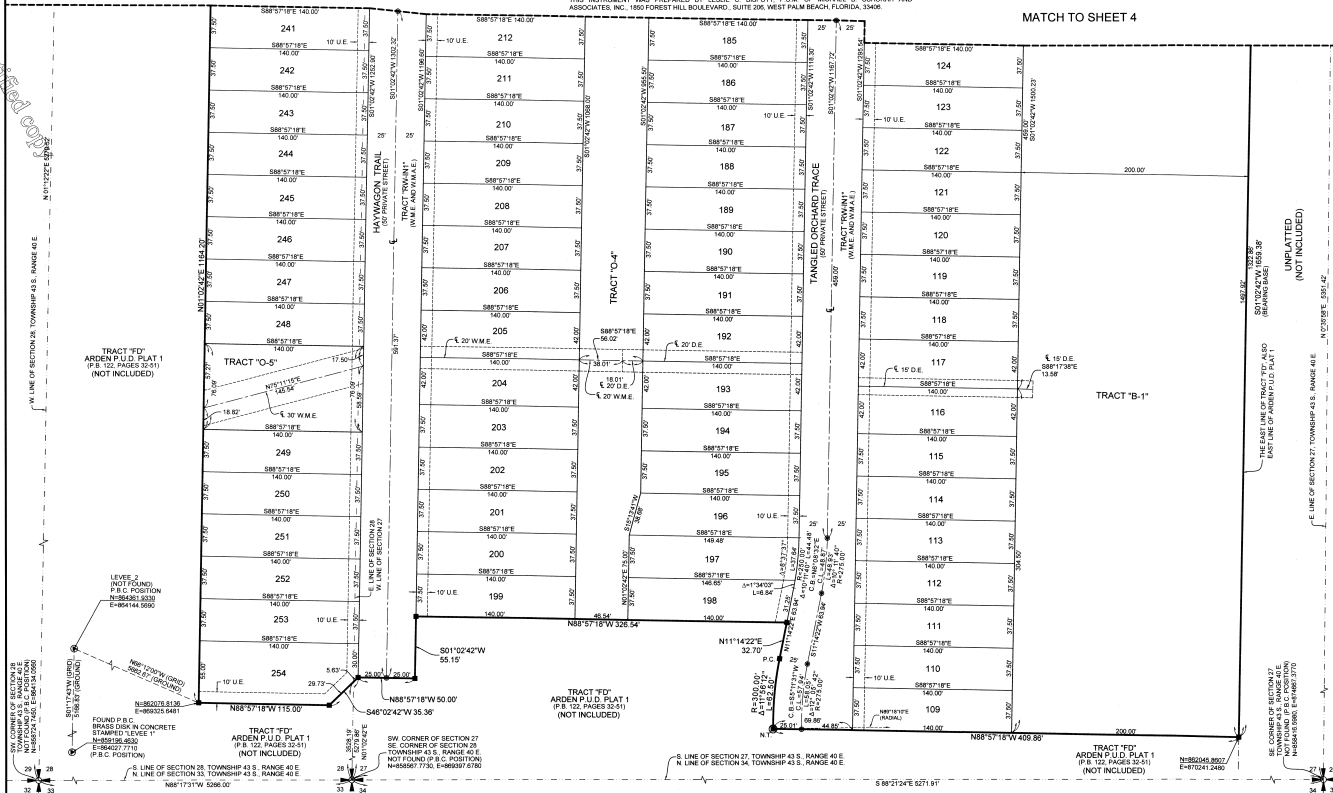
58

PREPARING SURVEYOR & MAPPER'S STATEMENT

THIS INSTRUMENT WAS PREPARED BY LESLIE C. BIRPOTT, P.S.M. OF MICHAEL B. SCHORAH AND ASSOCIATES, INC., 1800 FOREST HILL BOULEVARD, SUITE 200, WEST PALM BEACH, FLORIDA, 33409.

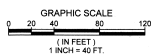
MATCH TO SHEET 4

MATCH TO SHEET 4



This is Not a Certified Copy

COORDINATE NOTE:
STATE PLANE COORDINATES SHOWN ARE GRID DATUM, NAD 83 1990 ADJUSTMENT FLORIDA EAST ZONE, COORDINATE SYSTEM 1983 STATE PLANE, TRANSVERSE MERCATOR PROJECTION.
LINEAR UNIT - US SURVEY FEET
ALL DISTANCES ARE GROUND
SCALE FACTOR = 0.9999519
GROUND DISTANCE X SCALE FACTOR = GRID DISTANCE
BEARINGS AS SHOWN HEREON ARE GRID DATUM, NAD 83 1990 ADJUSTMENT FLORIDA EAST ZONE

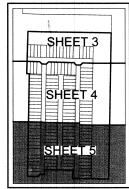


SHEET 5 OF 5



MICHAEL B. SCHORAH & ASSOCIATES, INC.
1800 FOREST HILL BLVD., SUITE 200
WEST PALM BEACH, FLORIDA 33409
EEM 2435 TEL: (561) 966-0200 FAX: (561) 940-9725 LSR 2/08

ARDEN P.U.D. POD I NORTH



UNPLATTED (NOT INCLUDED)

UNPLATTED (NOT INCLUDED)